

THE IMPOSSIBLE PUZZLE

Shipbuilding at Dakota Creek Shipyard



J Brooks Jensen

A Brooks Jensen Arts Publication

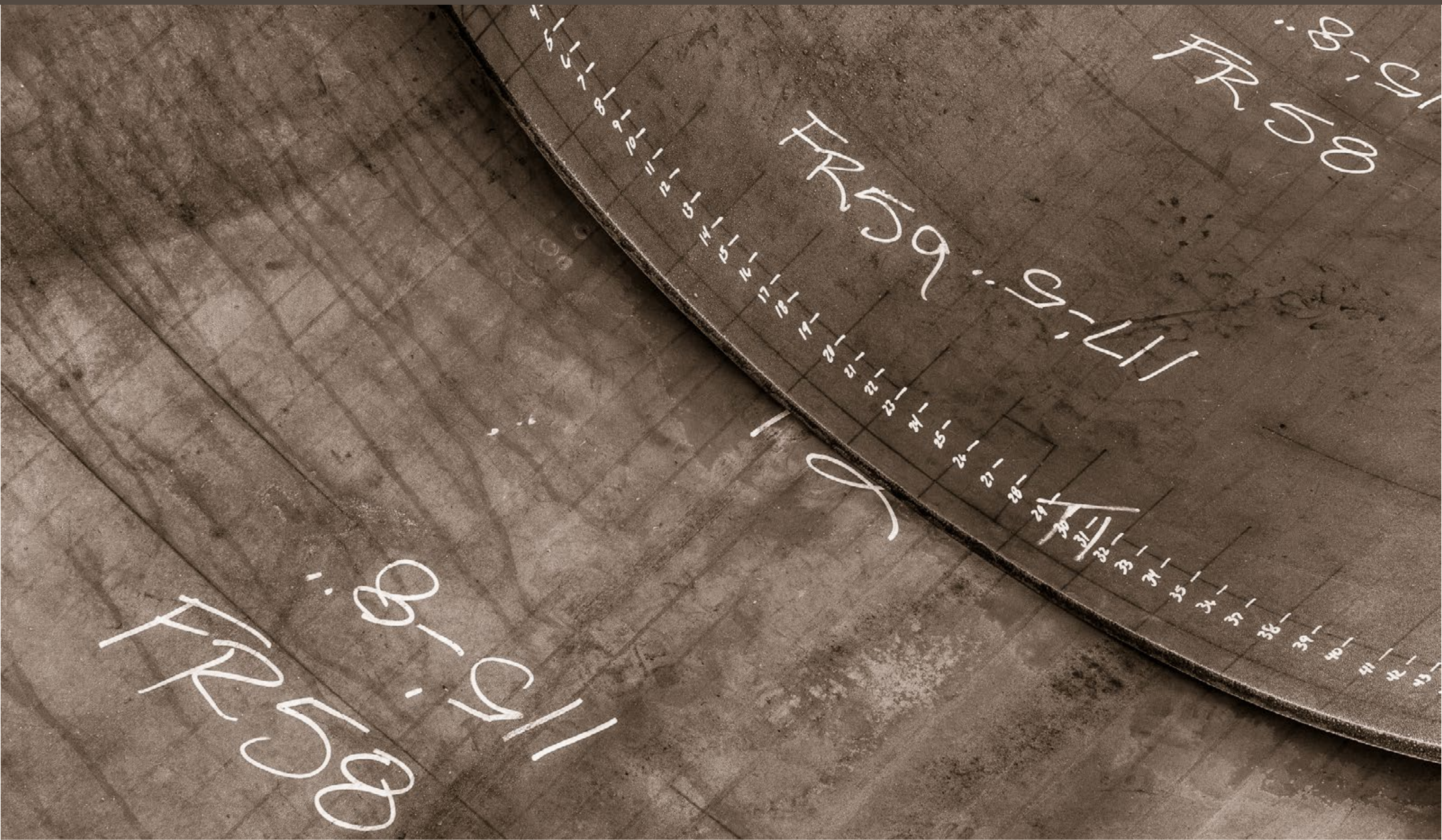
Shipbuilding.

Imagine a jigsaw puzzle that is 300 feet long ...
and weighs 5,400 tons ...

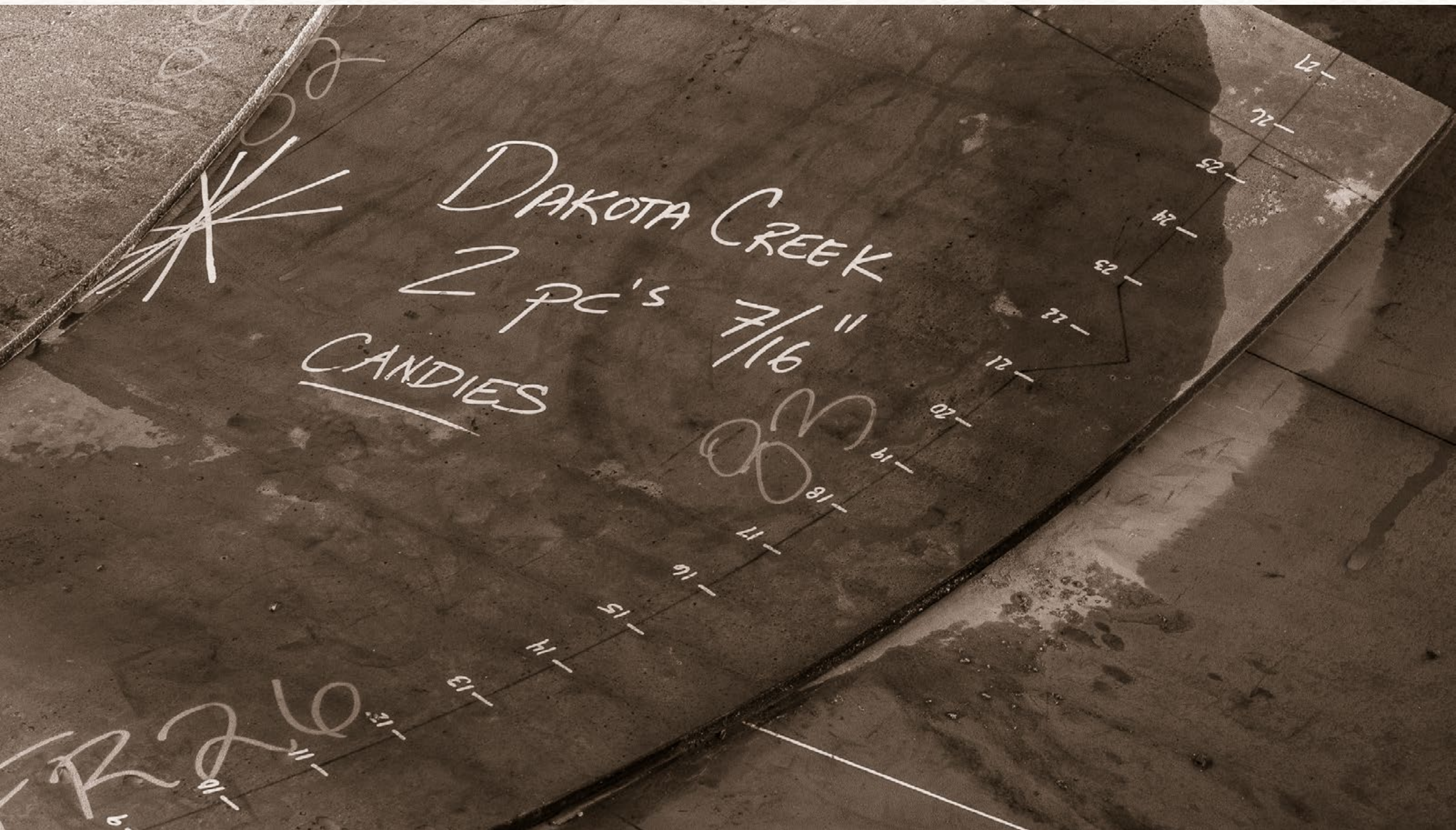
... once you've assembled it.

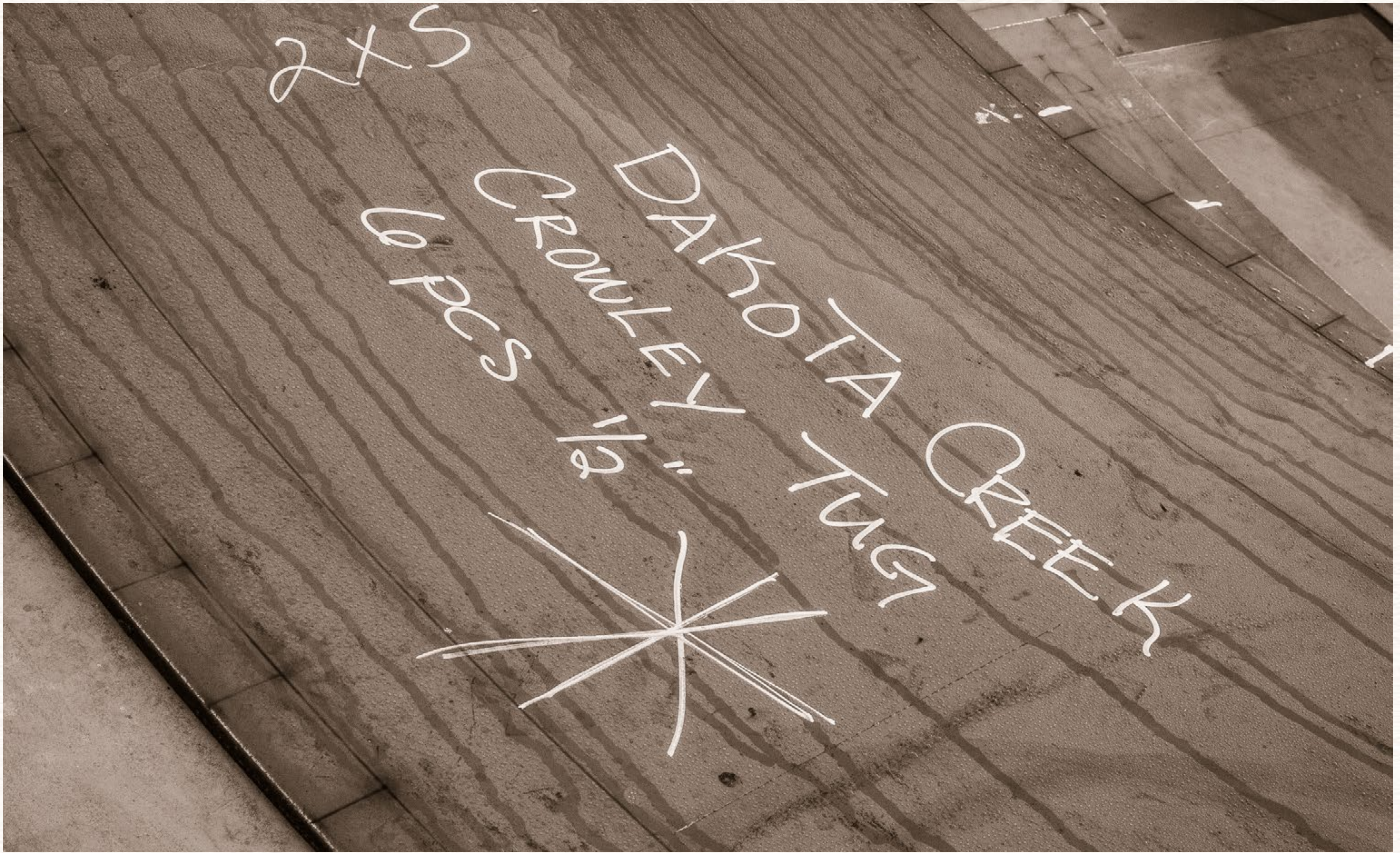


Shipbuilding is like *that*.



It starts with piles of cut steel, shaped to a tolerance of 1/32", each weighing more than a man can handle, no two of them exactly alike.

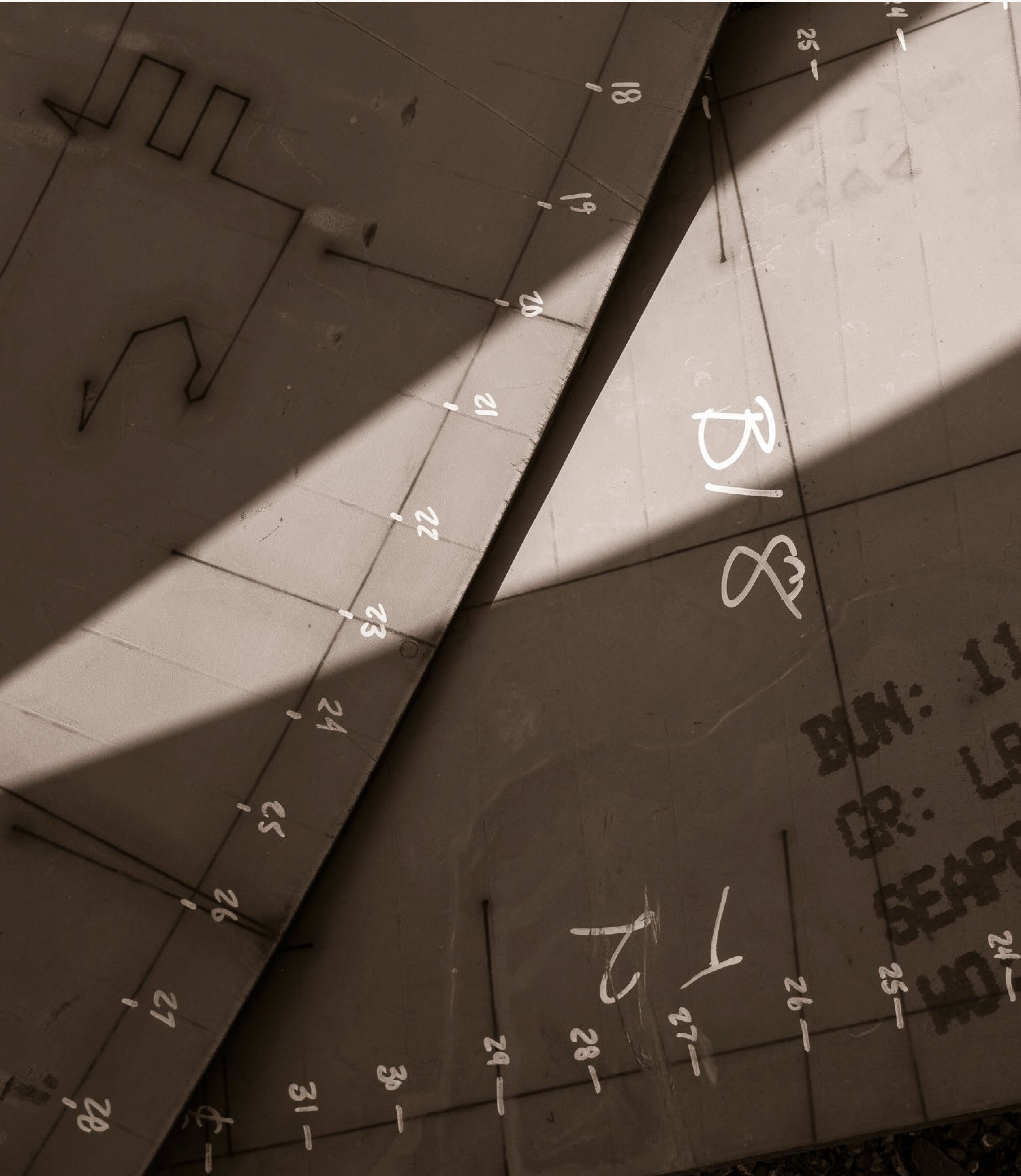




No straight lines, no flat pieces.
Instead, they are rounded like the waves, curved like the earth.



I've been photographing in the shipyard for years. I'm captivated by the cryptic notes, drawing, marker points, measurements, and comments found here and there on the steel. To my untrained eye, they are all hieroglyphics, but to the shipbuilders I suspect they are the keys to the puzzle.



DAKHO

00290-00011
2007.11.01

CREEK

21 PCS

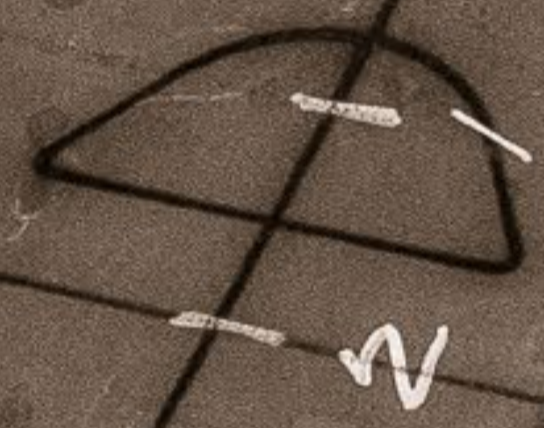
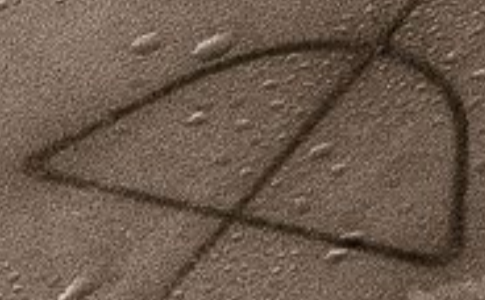
CANDIES

1 PC

CROWLEY



2x5



73
74
75
76
77

1
2
3
4
5
6



8600 DECK
 MAIN

MOD I



40









1108PTas

FRON



K10
cover

- K10 -

→ T06 →

↓ K15

- K10 -

K10 -

- K10 -

← T06 →

↔ K10 ↔

K15



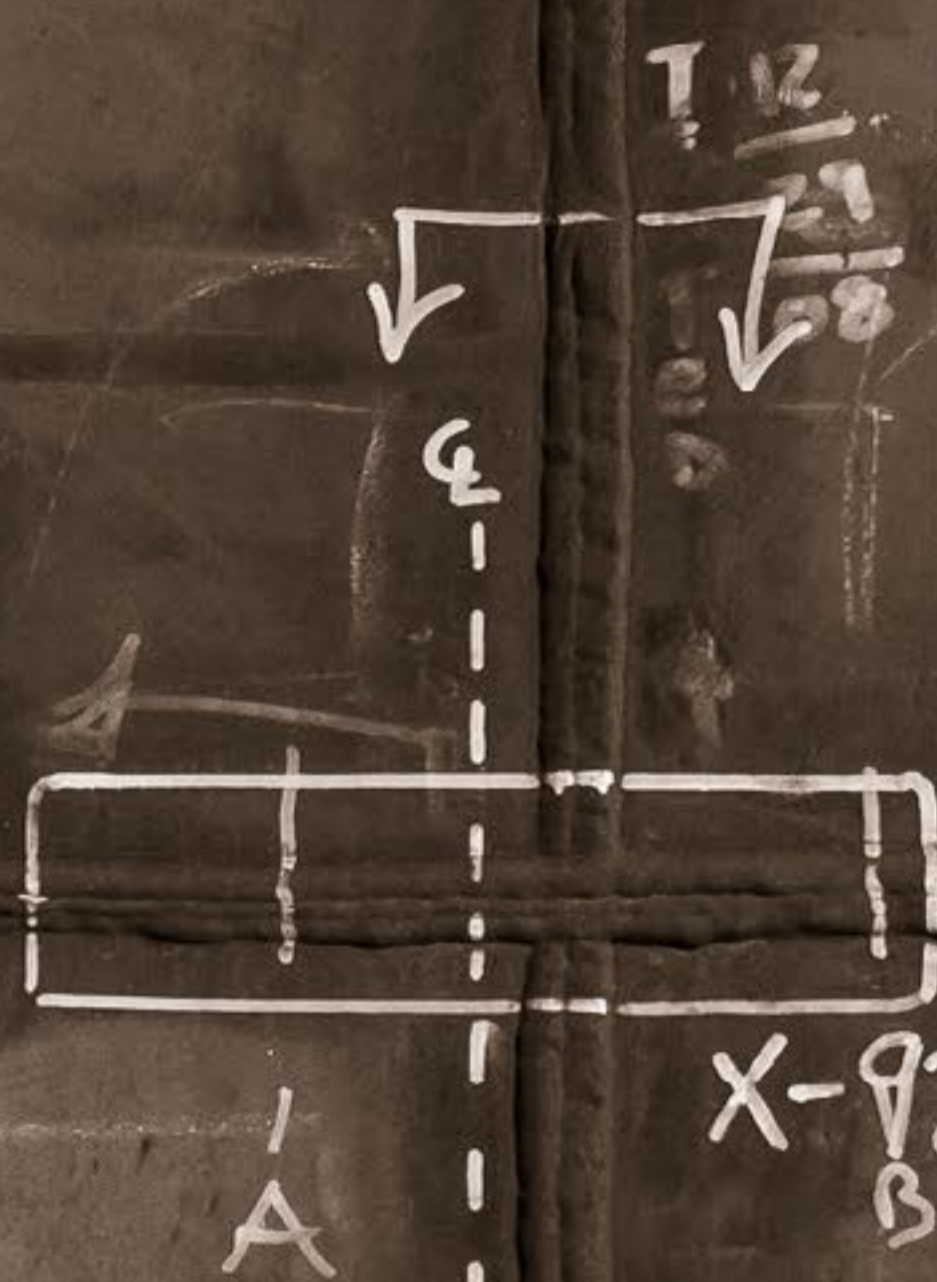
TOG

- TOG

MISS

KOKORO

TESTED 1/10/02



TESTED 2/29/02

XRAY

TESTED 11/13/02

-NO2-

118



- K10 -

- K10 -

K15

K10

K10-

K15

- K10 -



Tested 8-13-01

Tested 8-17-01

TOP

23

24

25

26

27



FR 15

169

196

186

x 12

186

32
10
22
42
164

164

169
117
152 7/8

1/8

7/11

FRIS

22

WRAPED



ZINC

ZINC

SIL

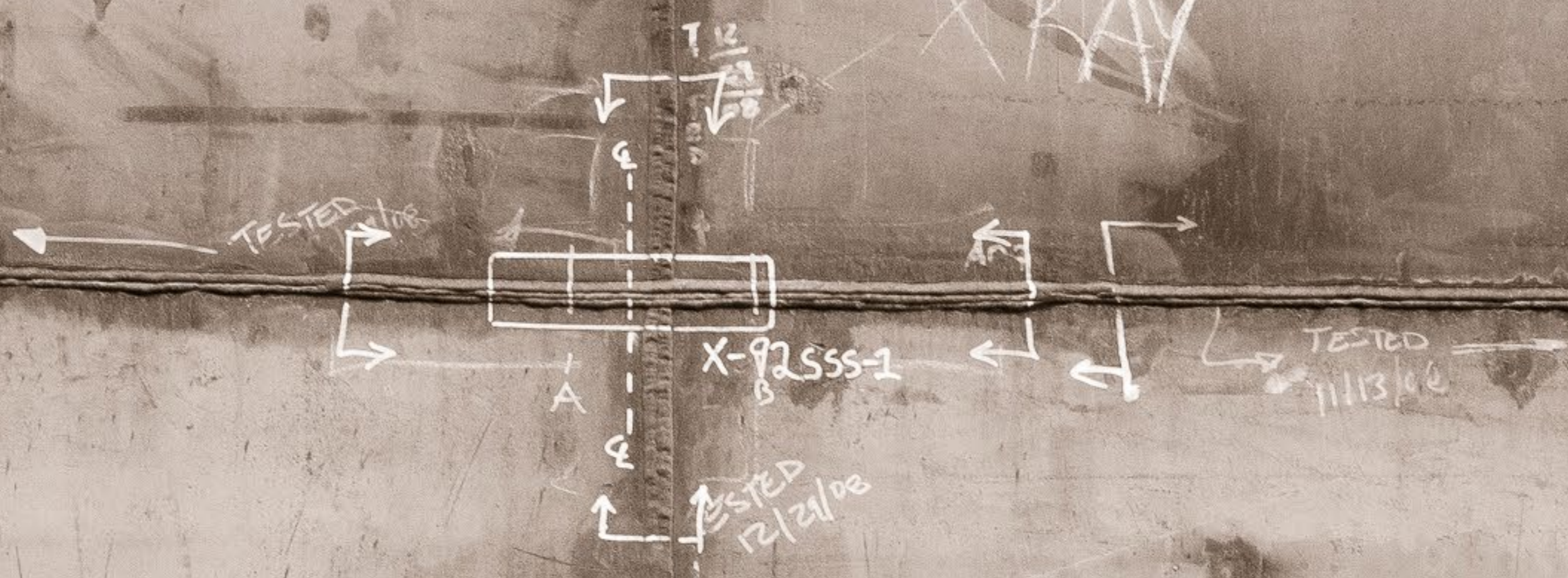
SIL



XRAY

-ADT-

DIO



117

118

TESTED 12/29/08
TESTED 11/13/08

TESTED 12/29/08

TESTED 11/13/08

DIO

TESTED 11/13/08

TESTED 11/13/08

DIO

TESTED 11/13/08

FR
49

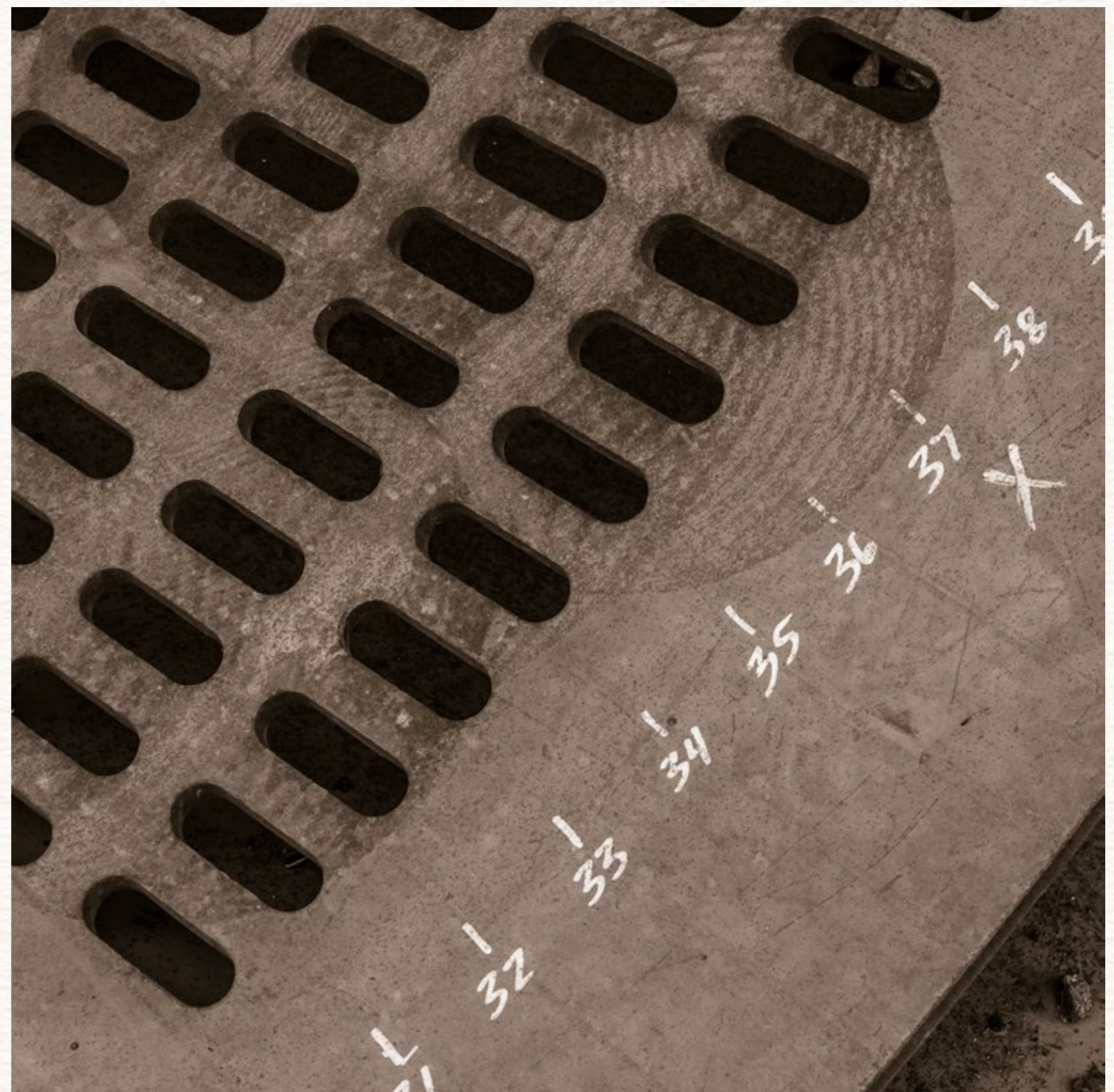
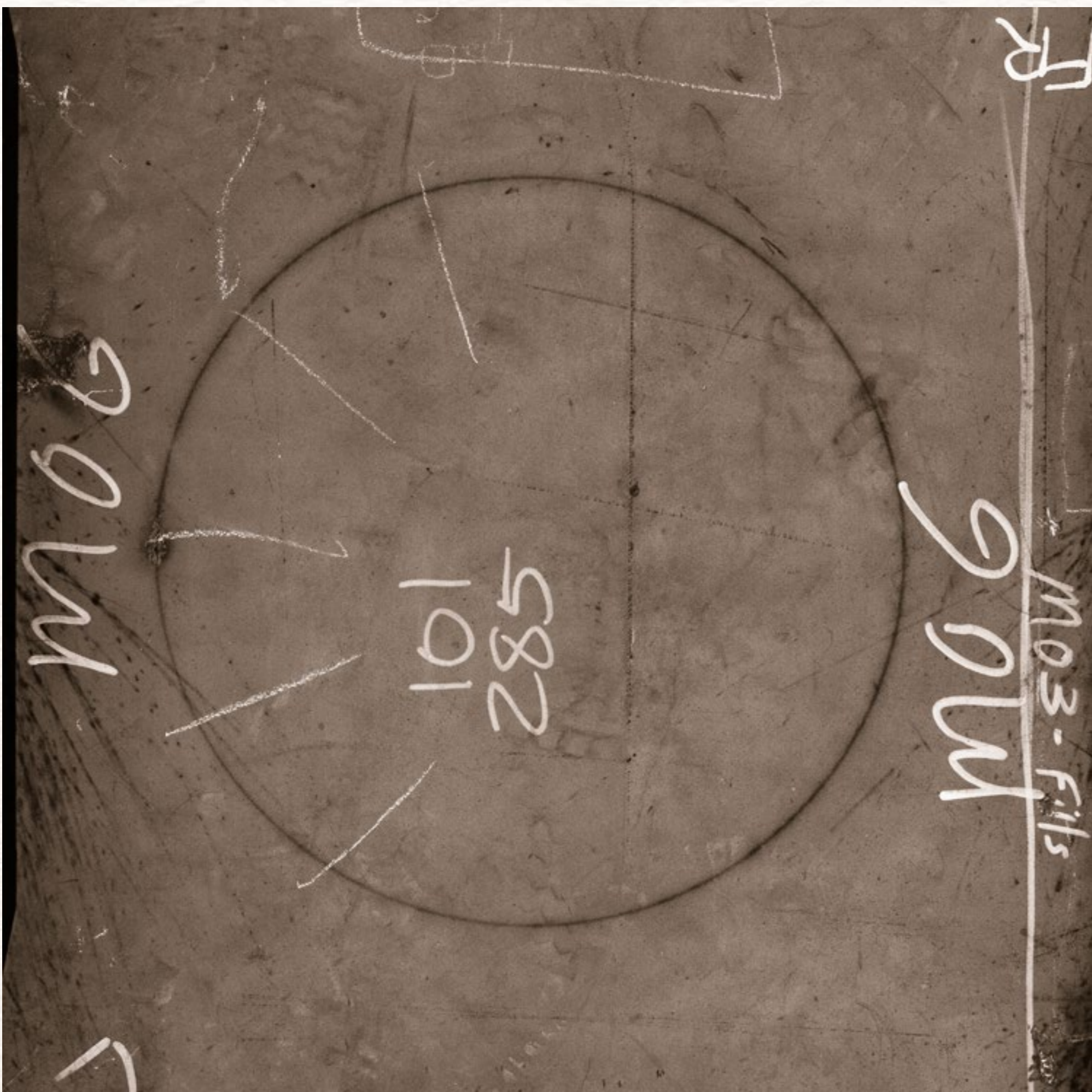
GII

Gausean
10/11



The tons of steel, equipment, and engines will *float*, when the shipbuilders are done; even more, it will move and work.

This simply *cannot* be done — except that they do it.
It's either magic or skill, or perhaps both.





Brooks Jensen is a fine-art photographer, publisher, workshop teacher, and writer. In his personal work he specializes in small prints, hand-made artist's books, and digital media publications.

He and his wife (Maureen Gallagher) are the owners, co-founders, editors, and publishers of the award winning *LensWork*, one of today's most respected and important periodicals in fine art photography. With subscribers in 73 countries, Brooks' impact on fine art photography is truly world-wide. His long-running podcasts on art and photography are heard over the Internet by thousands every day. All 900+ podcasts are available at [LensWork Online](#), the LensWork membership website. LensWork Publishing is also at the leading edge in multimedia and digital media publishing with *LensWork Extended* — a PDF based, media-rich expanded version of the magazine.

Brooks is the author of seven best-selling books about photography and creativity: *Letting Go of the Camera* (2004); *The Creative Life in Photography* (2013); *Single Exposures* (4 books in a series, random observations on art, photography and creativity); and *Looking at Images* (2014); as well as a photography monograph, *Made of Steel* (2012). His next book will be *Those Who Inspire Me (And Why)*. A free monthly compilation of of this image journal, [Kokoro](#), is available for download.

The contents of this computer media are copyrighted materials.

Please note that this computer file publication is a consumer product for private non-commercial use only. Its contents are copyrighted in its entirety and may not be duplicated by any means. All content is copyrighted by Brooks Jensen, his assigns or heirs, and may not be duplicated for any purpose or by any means without their consent. All rights reserved.

Please play fair.

© 2015 Brooks Jensen
Anacortes, WA, U.S.A.

Email brooks@brooksjensenarts.com

Additional work by Brooks can be found:
www.brooksjensenarts.com and www.lenswork.com